

2009

## Sampere Madrid

Estudio Sampere in Madrid, founded in 1956, is our largest school, with more than 1,700 foreign students attending courses here each year.

You will study in the prestigious Salamanca district, just one block from Retiro Park and a short walk from the Prado Museum.

The school has 25 air-conditioned classrooms, a social area, video room, computer room, free wi-fi access and library.

Most of our accommodations are located not far from the school. Walking distance is usually 20-25 minutes. Public transport (subway or bus) normally takes about 15 minutes. A journey of 30 minutes on public transport is possible.

Transport connections are excellent: many buses and two underground lines stop nearby. Average number of students: 120.

### The City

You will hear some "madriños" proudly say, "from Madrid to Heaven". Perhaps they are exaggerating "un poquito", but Madrid is certainly a charming and seductive city.

The Salamanca district, a bustling area of restaurants, bars, tapas bars and stores, also has the best shopping in the city. Exploring the city after school reveals much more.

Madrid's museums are world-class: the Prado, Thyssen-Bornemisza, the Royal Palace and the National Archaeological Museum are only the most famous.

Culturally, Madrid thrives, with many theatres and cinemas, a concert hall, music clubs and art galleries. Madrid is the birthplace of "la marcha", the intense nightlife of the madriños. The city centre is filled with all kinds of clubs for dancing, socialising and people-watching right through the night.

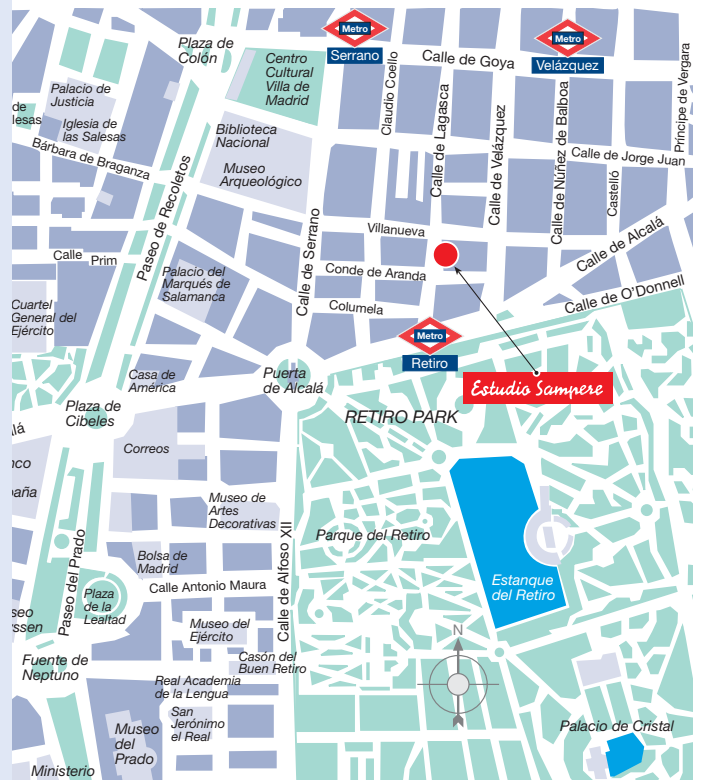
Madrid is a mixture of century-old traditions and modern metropolis, well reflected in the films of Pedro Almodovar. Madrid has always captivated creative people: Hemingway, Francis Bacon, Ava Gardner and Miles Davis have all fallen in love with the Spanish capital.

Madrid lies at the geographical centre of Spain at an altitude of 600 m and has a dry continental climate. In summer, temperatures can reach 35 Celsius, while in winter, the temperature can occasionally drop below freezing at night. Thanks to the dry climate, the heat in Madrid is quite bearable. Madrid has excellent transport links with the rest of Spain, making it the perfect base from which to explore other regions.



### Choose Madrid

- ▶ For its cosmopolitan atmosphere.
- ▶ For its museums, theatres, concerts and cinemas.
- ▶ For easy connections to the rest of Spain.
- ▶ For its nightlife.
- ▶ For nearby excursions to Toledo, Segovia and Ávila.
- ▶ For a chance to see "Real Madrid".



Mapa de Madrid (área central)



Virginia Sampere  
Directora



Asunción M. Pleite  
Directora  
Cursos Español



Margarita Muñoz  
Alojamiento

*"Among our schools in Spain Estudio Internacional Sampere is, without doubt, one of the best. Our students learn a lot of Spanish and are very satisfied with the education".*

**J. Hellberg**  
Spanska Institutet  
Sweden

2009

## Mini Group Courses

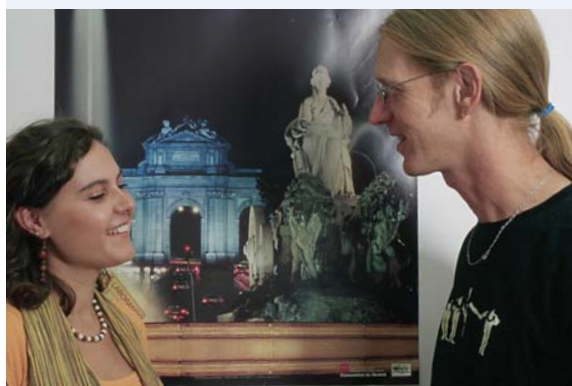
- ▶ Intensive Course (20 + 4 lessons/week).
- ▶ Long Term Courses (20 + 4 lessons/week).
- ▶ Intensive Plus (25 or 30 + 4 lessons/week).
- ▶ Exam Courses (20 + 2 lessons/week).

Morning (9:00-12:30) and afternoon (15:30-19:00) sessions subject to school decision.

- ▶ Super-Intensive (30 + 4 lessons/week).  
9:00-12:30 and 14:00-15:30 or 14:00-15:30 and 15:30-19:00, subject to school decision.

**6 students maximum per group (9 max. in May, June and July).**

- ▶ One-to-One Courses (10 to 40 lessons/week).



### Activities

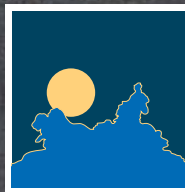
- ▶ Culture classes (3 per week).
- ▶ Business Spanish (1 per week).
- ▶ Full day excursions to Toledo, Segovia and others (3 per month - 12 to 25 €).
- ▶ Guided tours to famous Madrid museums (1 per week - 0 to 6 €).
- ▶ Nightlife events (1 per week - 0 to 15 €).

### Accommodation

- ▶ Homestay/Family, single room and half-board.
- ▶ Student room, self-catering.
- ▶ Studio for one or two persons.
- ▶ Hostel or hotel.



# Madrid



*El cuadro*

*La puerta*

*El espejo*

*El pintor*

*La Infanta*

**SPANISH COURSES IN MADRID, SALAMANCA, ALICANTE and ECUADOR**